

HT-25 by

The NEXT GENERATION High-Temp Sanitizer

- Wash, rinse, and sanitize in as little as 45 seconds – Fastest in the industry!
- POWERFUL 3 HP PUMP – Scrubs away what others leave behind!
- Low water usage - only .85 gal. per load!



(Available with)
Stainless Steel Built-on Booster.



HT-25

SAVE TIME, MONEY,
AND RESOURCES!

- Approved Dual Sanitizer – Same machine serves as either High or Low Temp
- Versatile door design – installs corner or straight

Increase your warewashing capacity without expanding your kitchen. Our HT-25 washes 35% FASTER with 33% LESS CHEMICALS, UTILITIES, AND WATER

The features of the HT-25 eliminate re-washes. A powerful design with powerful results!

At American Dish Service, Quality People, Designs, and Products have been the foundations of our organization for over 45 years.

www.americandish.com

900 Blake Street Edwardsville, KS 66111-3820



American Dish Service
Manufacturers of Ware Washing Equipment

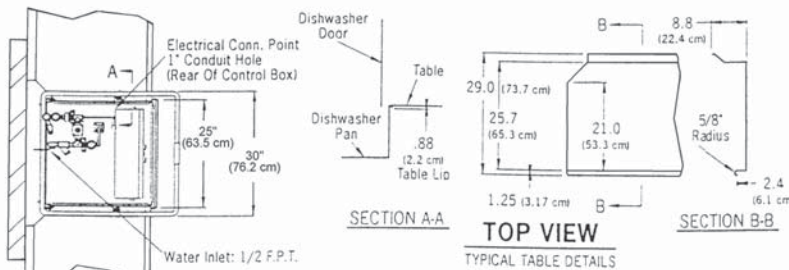
Toll Free (800) 922-2178 Phone (913) 422-3700 Fax (913) 422-6630

HT-25

The NEXT GENERATION High-Temp Sanitizer

This powerful, next generation, high-temp sanitizer provides you with all these features...

- Available with either 45 or 60 second time cycle
- Patented Self Cleaning Spray System
- Auto fill and Auto Shut Off (Standard Equipment)
- Two stage SS Drain Filter – Eliminates clogged pumps
- Built-in Scrap Accumulator – Keeps Wash Tank Clean
- 3 HP Wash Pump
- ADS patented Low-Water Protection
- Durable-life tank heater
- Patented Captive spray arm end caps – no parts to lose
- 18" Door Opening
- Configured for corner or inline – installs without conversion
- No troublesome circuit boards – prevents down time

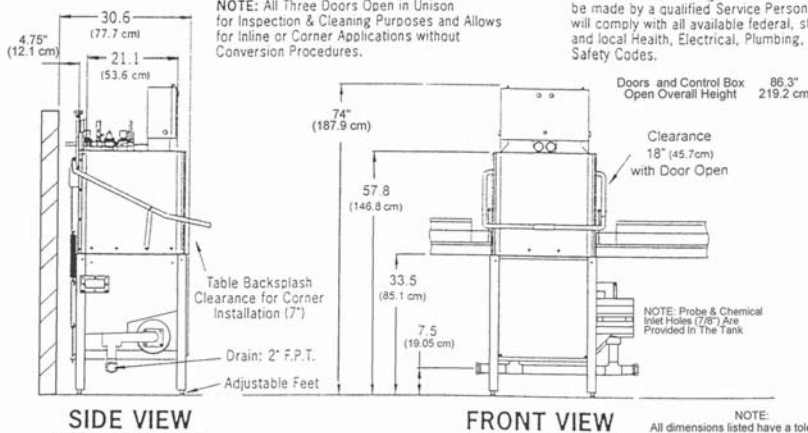


* Manufacturer reserves the right to modify these specifications in compliance with regulatory agencies and manufacturing expediency.

CAUTION:

Electrical and plumbing connections must be made by a qualified Service Person who will comply with all available federal, state, and local Health, Electrical, Plumbing, and Safety Codes.

NOTE: All Three Doors Open in Unison for Inspection & Cleaning Purposes and Allows for Inline or Corner Applications without Conversion Procedures.



NOTE: All dimensions listed have a tolerance of + or - 1/8" unless otherwise noted.



MODEL HT-25 SPECIFICATIONS

U.S. REGISTERED PATENTS

Rated Capacity (Racks/Hour)	72 NSF Rated
Wash Tank Capacity	11 Gal. (41.63 Liters)
Water Temperature, Wash	160° F. (71° C.)
Water Temperature, Rinse	180° F. (82.2° C.)
Water Consumption	0.85 Gallons/Rack (3.193 Liters/Rack)
Wash Motor	3 HP

ELECTRICAL REQUIREMENTS: 3-PH, 208/240V, 40amp, 60 Hz
5-wire connection (neutral, ground, 3 #8 power wires, 50a capacity)
Single PH: 208/240V, dual circuits 60/30 amp, 60 Hz
Circuit 1: (neutral, ground, 2 #10 ga. wires, 40a capacity)
Circuit 2: (2 #6 ga. wires, 75a capacity)

HT-25/HT-34 W/FACORY INSTALLED BOOSTER: (3-Ph Only) single point
Connection req's 208/240V, 3Ph, 50a, 5-wire connection (Neutral, Ground,
3 #6 ga. power wires, 65 a capacity) High leg goes to L-3

Wash Heater	8KW
Rack Size	19-3/4" x 19-3/4" (50.2 cm x 50.2 cm)
Door Clearance	18" (45.72 cm)
Water Inlet (1)	1/2" F.P.T.
Drain	2" F.P.T.
Height (All Doors Closed)	74" (187.96 cm)
Width, Table to Table (Inline Model)	25" (63.5 cm)
Width w/ Scrap Accumulator (Overall)	37" (93.9 cm)
Depth (Overall)	33.5" (85.0 cm)
Shipping Weight	485 lbs. (219.9 kg.)
Shipping Volume	81.51 cu. feet

© 10/02

Effective: 10/02